

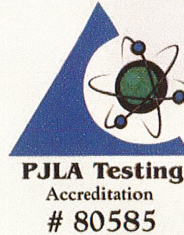
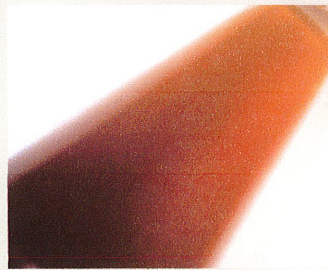
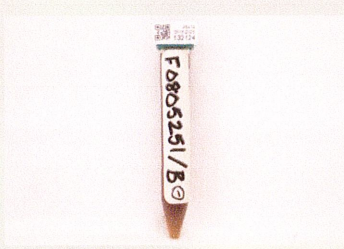
Certificate ID: **132124 (Prelim)** Received: **5/15/25**
 Client Sample ID: **VS MCT Oil R9005**
 Lot Number: **F0805251B**
 Matrix: **Tincture/Infused Oil-MCT Oil**

Scan QR Code
for authenticity



ElleVet
The Heart & Science of Better Pet Health

Authorization: Chris Hudalla, Chief Science Officer	Signature: <i>Christopher Hudalla</i>	Date: 5/19/2025
--	--	--------------------



The data contained within this report was collected in accordance with the requirements of ISO/IEC17025:2017. I attest that the information contained within the report has been reviewed for accuracy and checked against the quality control requirements for each method. These results relate only to the test article listed in this report. Reports may not be reproduced except in their entirety.

CN: Cannabinoid Profile & Potency [WI-10-17 & WI-10-17-01]

Analyst: CR

Test Date: 5/16/2025

This sample was analyzed using Liquid Chromatography coupled with Photo Diode Array detection (LC-PDA). The collected data was compared to data collected for a reference standards at a known concentrations.

132124-CN

ID	Weight %	Concentration (mg/mL)	
Δ9-THC	0.184	1.76	
THCV	ND	ND	
CBD	3.45	32.9	
CBDV	ND	ND	
CBG	0.0670	0.639	
CBC	0.161	1.54	
CBN	<LOQ	<LOQ	
THCA	0.0975	0.930	
CBDA	3.62	34.5	
CBGA	0.0615	0.587	
CBDVA	ND	ND	
Δ8-THC	ND	ND	
exo-THC	ND	ND	
Total	7.64	72.9	0% Cannabinoids (wt%) 3.62%
Total THC	0.270	2.58	Limit of Quantitation (LOQ) = 0.0110 wt%
Total CBD	6.62	63.2	Limit of Detection (LOD) = 0.00367 wt%

Ratio of Total CBD to THC 24.6:1

Total THC (and Total CBD) are calculated values for total cannabinoids after heating, assuming complete decarboxylation of the acid to the neutral form. It is calculated based on the weight loss of the acid group during decarboxylation: Total THC = (0.877 x THCA) + THC. This calculation does not include other cannabinoid isomers (eg. D8-THC and exo-THC). ND=None detected above the limits of detection (LOD), which is one third of Limit of Quantification (LOQ). For values reported as "<LOQ", the estimated value is included in the calculated Total.

END OF REPORT